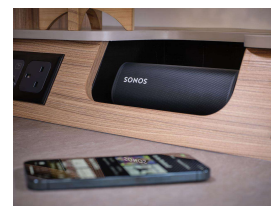
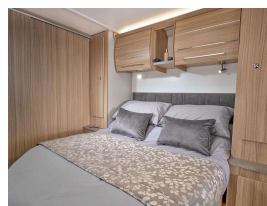


## 2026 Bailey Phoenix GT75 644



### INFORMATION

#### Cash Price

Includes GST

**\$75,990**

+ on-road-costs of \$1,250

#### Stock ID

4550

#### Body

Caravan 17 - 20ft

#### VIN

SGBAD4B3SPX01715

#### Odometer

-

The "2026 Bailey Phoenix GT75 644" is a 4-berth caravan with a fixed island bed and a rear washroom. It features a contemporary design with an Alu-Tech bodyshell in Dove Grey and Polar White, offering all-weather touring capabilities. The caravan includes a front lounge that converts into a double bed or twin singles, a well-equipped kitchen, and a full-width end washroom with a separate shower.

#### Key Features:

#### Layout:

The 644 model has a rear island bed and a front lounge that can be configured as a double bed or two singles.

#### Construction:

It utilizes Bailey's Alu-Tech bodyshell, known for its strength and durability.

#### Interior:

The caravan boasts a modern interior with a Truma Combi 2 heating and hot water system, a Thetford K-Series oven, grill, and 4-burner hob, and a Dometic 103L refrigerator with a 12L freezer.

#### Washroom:

It features a full-width end washroom with a separate shower cubicle.

#### Additional Amenities:

The caravan includes a SONOS speaker, a microwave with a ceramic hot plate, and a vertical opening front skylight.

#### Insulation:

The Phoenix GT75 644 is designed for all-weather touring with Grade 3 thermal insulation.

#### Optional Extras:

Options like solar panels, awnings, and motor movers can be added.

#### Warranty:

It comes with a full Bailey factory warranty, including a 10-year water ingress warranty.

### Features

- » BLINDS
- » CASSETTE TOILET
- » CURTAINS
- » DOOR FLY SCREENS
- » FITTED CARPETS
- » FRIDGE/FREEZER
- » GAS HOB
- » GRILLE
- » Heater
- » ISLAND BED
- » LOSE FIT CARPETS
- » MAINS ELECTRICITY
- » MICROWAVE
- » OVEN
- » SEPERATE SHOWER
- » SMOKE ALARM
- » STEREO SYSTEM
- » WATER HEATER
- » WINDOW FLY SCREENS

**Peter Mcphail**

0274 734 914

peter@motorhub.co.nz

**William McPhail**

021 0269 3996

william@motorhub.co.nz

Motor Hub, Phone 0800 486 287, Email [peter@motorhub.co.nz](mailto:peter@motorhub.co.nz)  
393 Ellerslie-Panmure Highway, Mount Wellington, Auckland 1060, New Zealand  
[www.motorhub.co.nz](http://www.motorhub.co.nz)